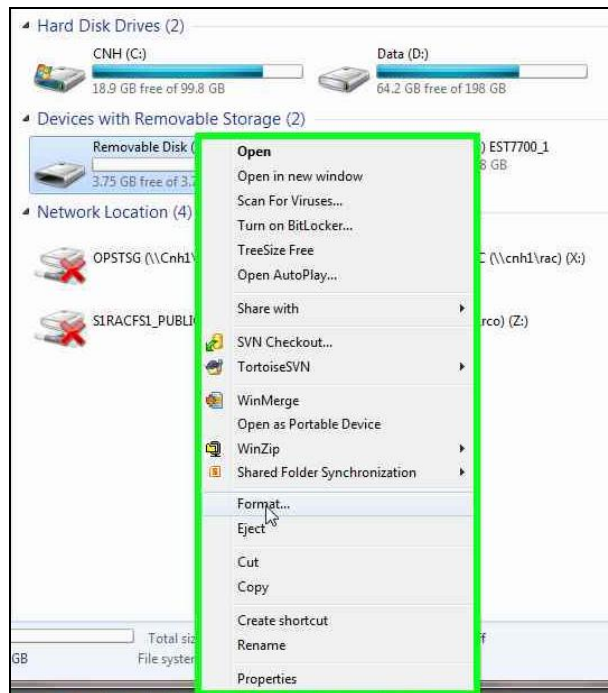


# Data Management Best Practices

## Data Management for the AFS Pro 700 / Intelliview 4

It is recommended to follow the procedure below at the start of each season. This will ensure that the display continues to run efficiently and that data from the previous season is properly backed up.

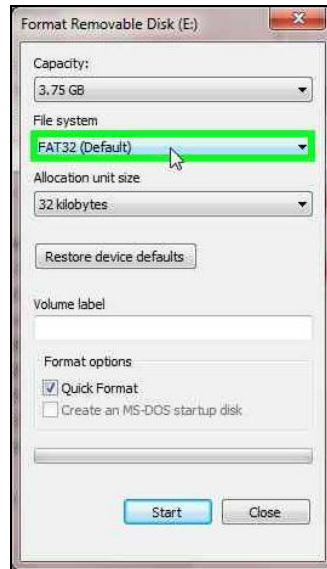
1. Remove the USB memory device from the display (with the display powered down).
2. Archive the data from the display in the desktop software.
3. Format the USB stick using FAT 32.
  - a. In **'Windows Explorer' or 'My computer'**, right click on the drive letter containing the USB stick and choose **'Format'**



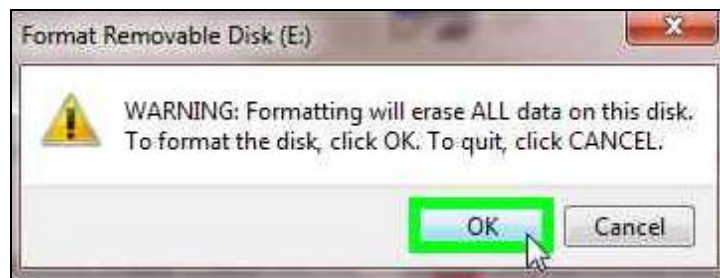
- b. Choose **'FAT 32'** in the **'File System'** drop down box.

## Data Management Best Practices

---



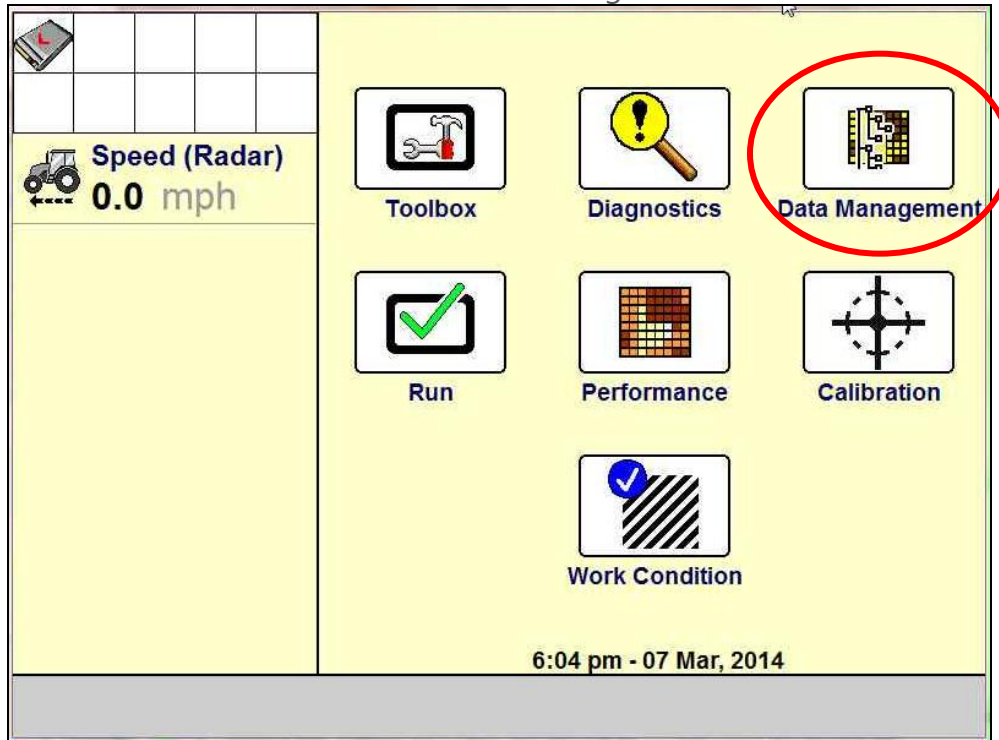
- c. Click the 'Start' button to start formatting the drive.
- d. A confirmation window appears. Click 'OK' to begin formatting the drive.



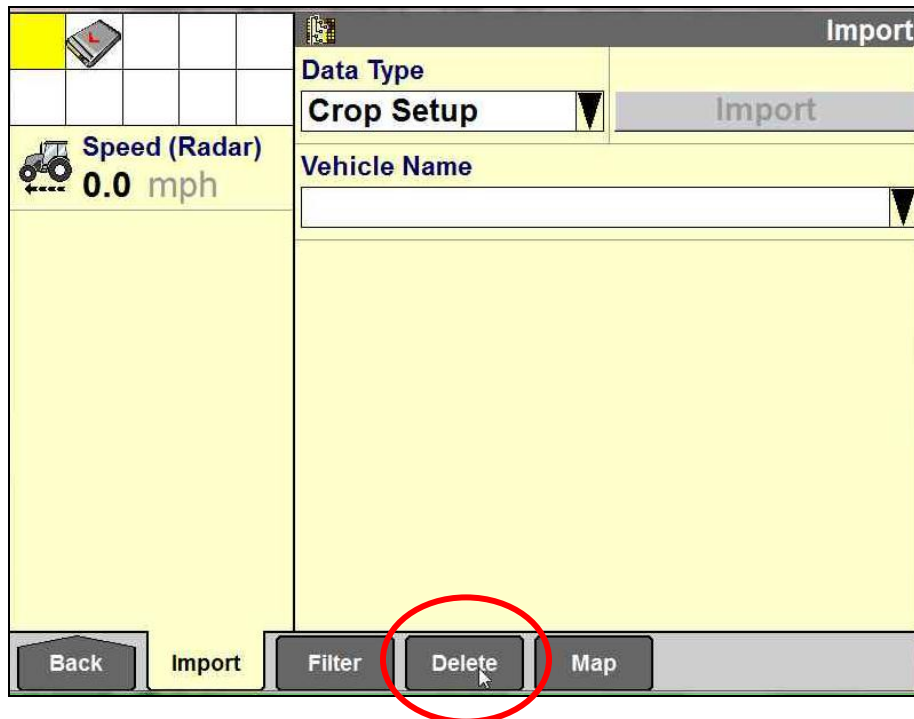
4. Export the boundaries from the desktop software to the USB memory device. This step is only required for customers who use boundaries.
5. Do not insert the USB memory device into the display at this time.
6. Delete the tasks on the display. By deleting only the tasks, the Grower, Farm and Field names remain intact as well as guidance swaths.

# Data Management Best Practices

a. From the home screen choose 'Data Management'

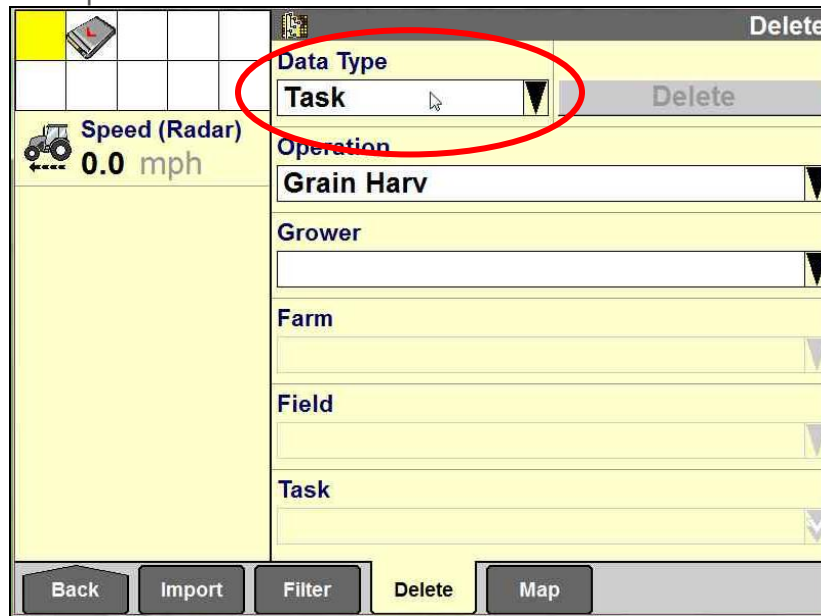


b. Select the 'Delete' tab on the bottom of the screen.

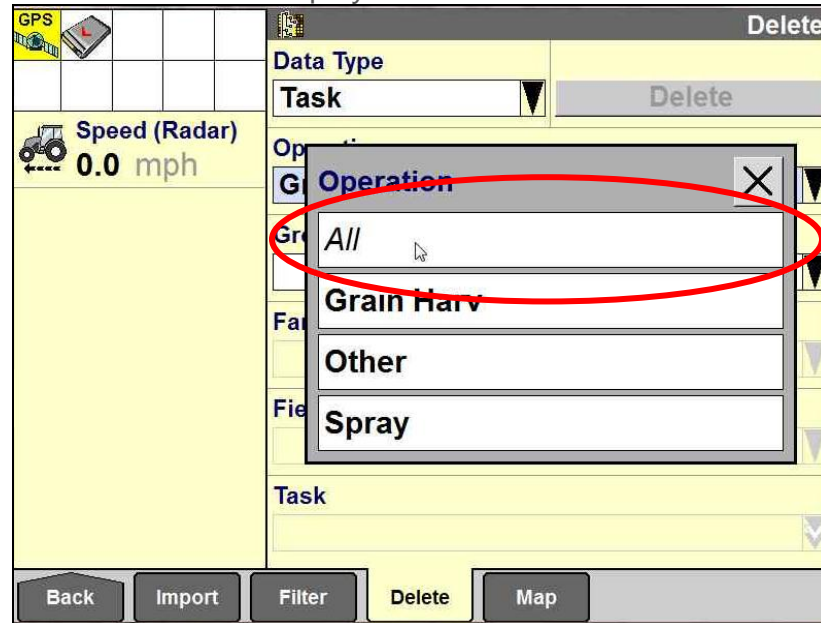


## Data Management Best Practices

- c. In the 'Data Management' > 'Delete' screen, choose 'Task' in the 'Data Type' selection pick-list.

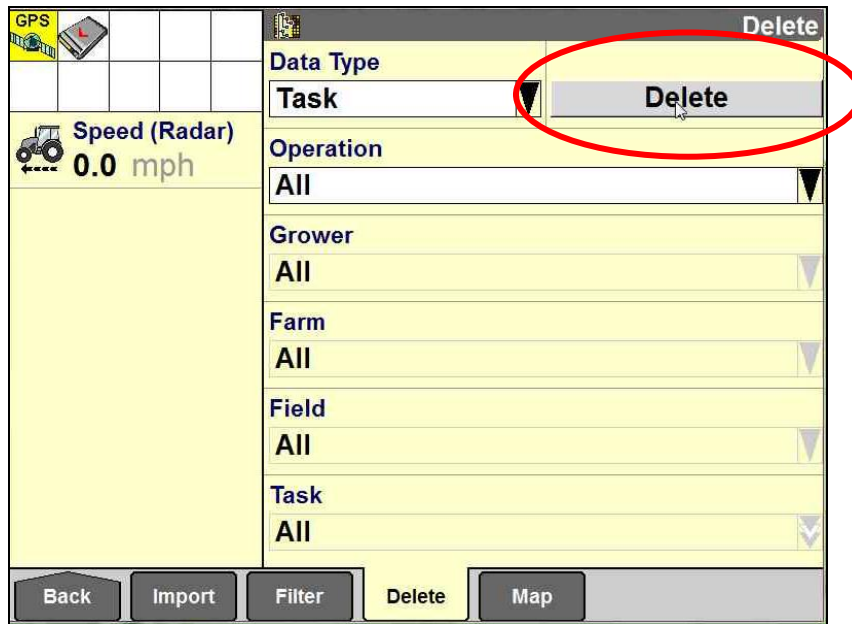


- d. Choose 'All' for 'Operation', 'Grower', 'Farm', 'Field' and 'Task' to ensure all tasks are removed from the display.

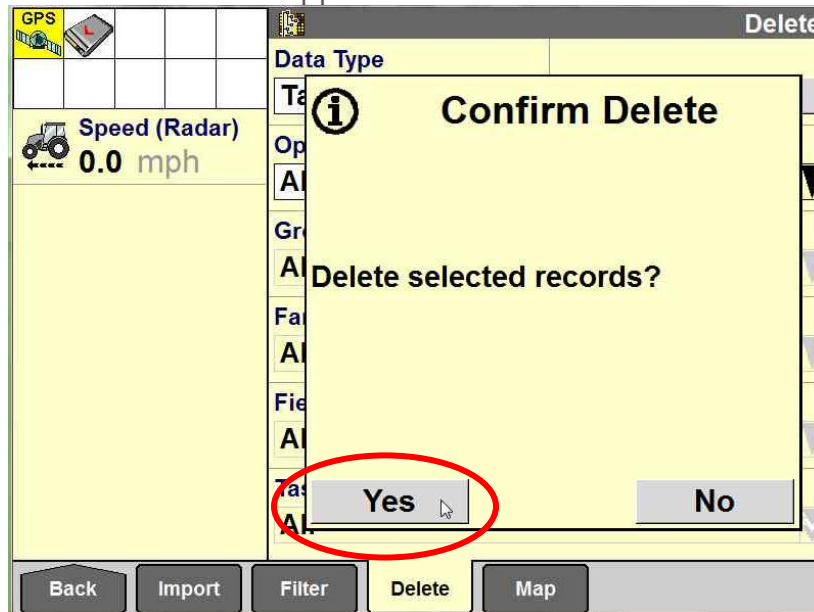


# Data Management Best Practices

e. Select the 'Delete' button.



f. A confirmation window appears. Click 'Yes' to confirm the task deletion.



## Data Management Best Practices

---

7. With the display powered down, insert the blank USB memory device back in the display.
8. Return the unit to service.

**Reminder!**

**Archive the USB memory device to the desktop software daily.**

**Perform the above steps when changing operations. For example, changing from planting to spraying or from spraying to harvesting.**